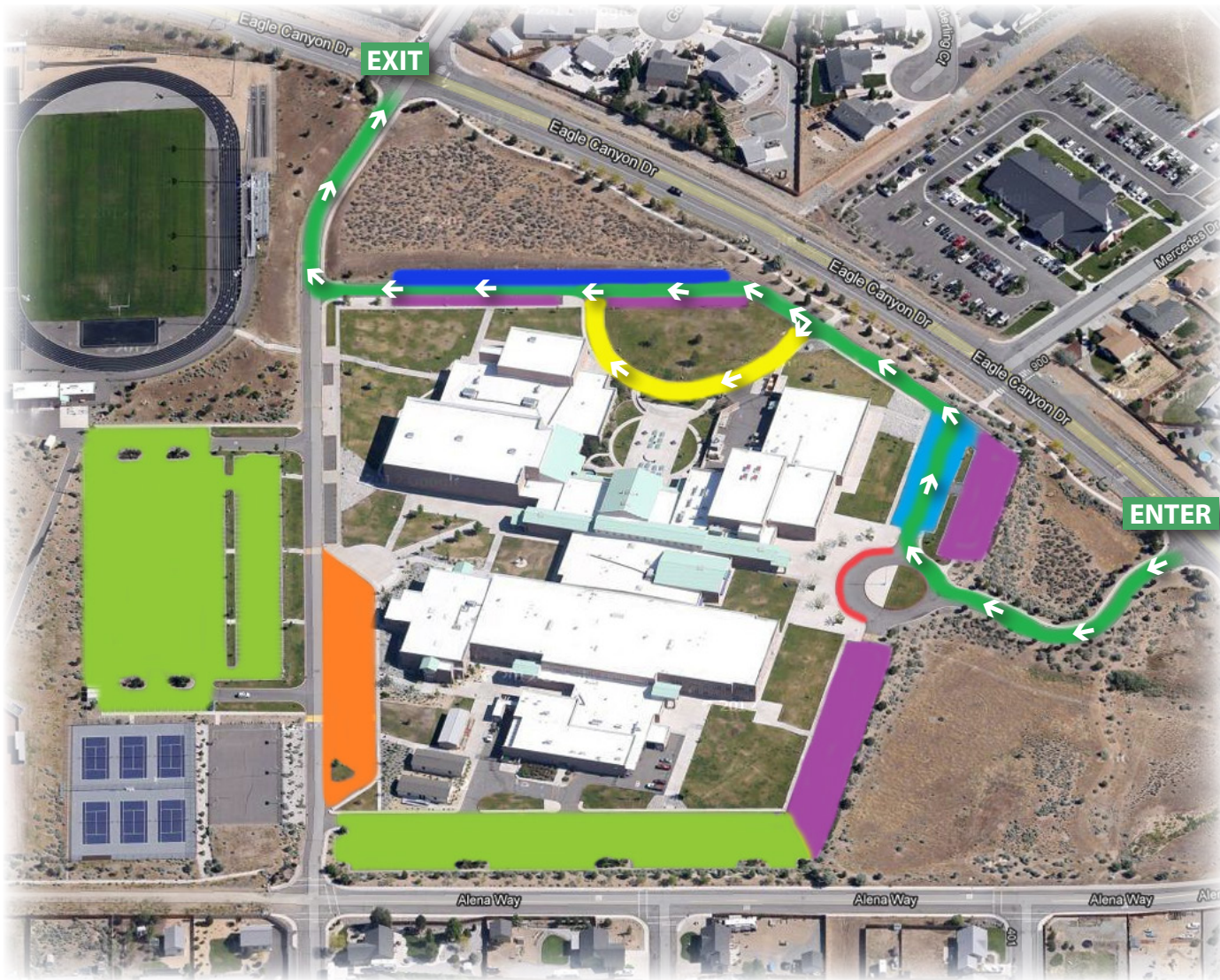


Washoe County School District Spanish Springs High School Traffic Plan

In effect, mornings 7:30 am - 8:30 am; afternoons 2:00 pm - 3:00 pm on school days.



- Vehicle Travel Path (Enter to Exit)
- Student Parking Area
- Staff Parking Area
- Visitor Parking Area
- Bus Loading Zone
- Emergency Vehicle Zone (Restricted Access)
- Student Drop off
- Parental Waiting Zone (must be parked in a parking space)